

EaCo Chem

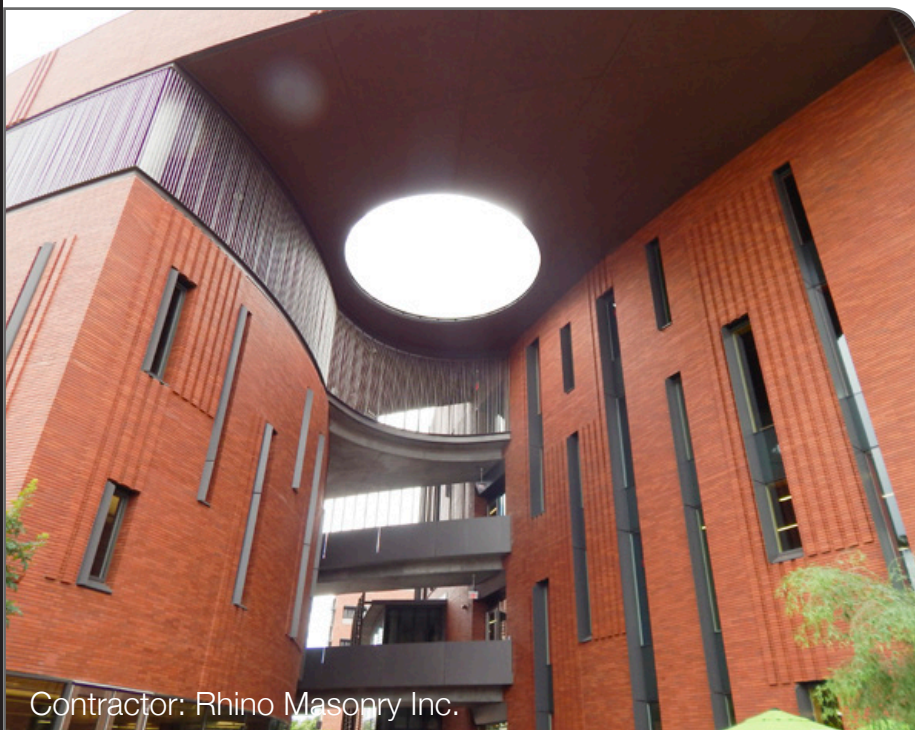
NEW CONSTRUCTION

NEW CONSTRUCTION CLEANING WITH EACO CHEM,

BRICK
BLOCK
NATURAL STONE
PRECAST
LIMESTONE
COLORED MORTAR
GLAZED BRICK
COLORED BLOCK
GLAZED BLOCK
WINDOWS
SMOOTH BLOCK
SPLIT FACE
STONE VENEER
BUFF BRICK
BURNISHED BLOCK
RED BRICK
GROUND FACED BLOCK
CAST STONE
HARDSCAPE
ALL PAVERS

NMD 80™
NEW MASONRY DETERGENT

CLEANS AND REMOVES
EXCESS MORTAR
JOB DIRT
EFFLORESCENCE
CALCITE



Contractor: Rhino Masonry Inc.

SAFE - COST EFFECTIVE - EXCELLENT CLEANING RESULTS

EaCo Chem, Inc. • 765 Commerce Avenue • New Castle, PA 16101
(800) 313-8505 • Fax (724) 656-0757 • www.eacochem.com • info@eacochem.com

One Product for Cleaning all of These!



- Red Brick
- Buff Brick
- Precast
- Stone Veneer

- Windows
- Burnished Block
- Ground Faced Block
- Natural Stone

- Limestone
- Colored Mortar
- Colored Block
- Granite (Non-Polished)

One Choice - High or Low Pressure Rinse!

*High Pressure Rinse
for Speed!*

*Low Pressure Rinse
for Color Fastness!*



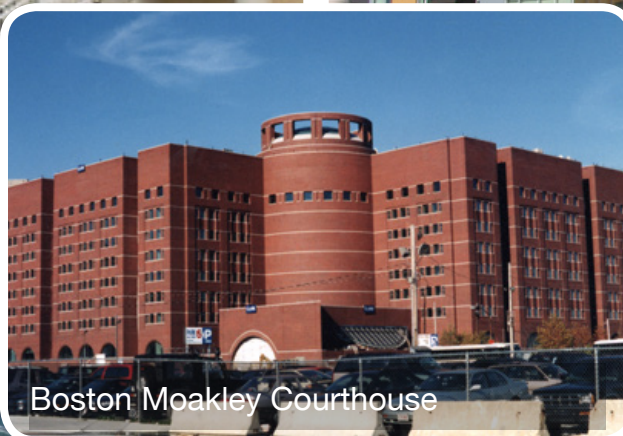
RESULTS THAT SELL... OVER AND OVER AGAIN!



Strom Thurmond Wellness Center
Columbia, NC



Sacramento, California



Boston Moakley Courthouse



Cambridge Side Hotel



Burlington Building

NMD 80™

NEW MASONRY DETERGENT

NMD 80 is a safe, effective, and profitable way to clean all new masonry.

NMD 80 is a powerful detergent-based solution designed for safe and effective removal of mortar smears from masonry surfaces and surrounding materials. It can be used on all masonry substrates including brick, stone, synthetic stone, precast, architectural, and colored block.

This product is capable of extremely effective cleaning without brushing or scrubbing and will leave the cream on the mortar joints. Using the EaCo Chem process is essential to experience great reductions in chemical costs and cleaning time. Combine these cost reductions with heightened safety and excellent final appearance, and you have tomorrow's chemistry today.

INNOVATIVE PROCESS REDUCES CLEANING TIME **90%***

* Versus traditional bucket and brush cleaning



ECJet



NO BRUSHING
NO ETCH
NO YELLOWING
NO SANDY JOINTS
NO EFFLORESCENCE

NO PROBLEM



A new masonry detergent you can spray with
NO MASK

Our buffered and balanced new masonry detergent has consistently over the years been tested by safety officers around the country. At use dilutions it does not require a respirator. Some may choose to wear a respirator in confined spaces for comfort.



Uses 80% less water than other cleaning processes.

Biodegrades readily. Generally NMD 80 runoff should be **neutral** within an hour in exterior cleaning where runoff is not collected.



WATER IS NOT YOUR FRIEND

Most of the problems associated with staining or deposits on or in masonry/concrete walls are due to excess water migration. Our top down process requires a thorough rinse. Thorough is not soaking or drenching a wall, it is methodical and consistent (refer to videos). All parts of the wall should be rinsed once. Absorptive brick or cast stone cause worry among many contractors, don't worry. Our process works perfectly with these substrates.

Additional issues are discussed in the Complete Cure Brochure. Vanadium and Manganese Issue Statement is also something that should be reviewed.

EACO CHEM CLEANING PROCESS

Beginning from the top of the wall

1. Lightly pre-wet or pre-cool the wall.
2. EC Jet apply chemicals to the area to be cleaned.
3. After first application of chemical, scrape the area with a long handled scraper from the wall.
4. Check smears and tags to see if they crumble easily (N type mortar usually only requires one application. Harder mortars (S or PCL) and extensive residue will benefit from repeated applications.)
5. If needed, repeat application to melt remaining residue and extend dwell time.
6. With NMD80, the longer it stays wet on the wall, the cleaner the result and the least amount of rinsing is required. After reapplication scraping can be done further down the wall.

I. Choose the rinse style: Brick, split face and common block, natural stone, and precast use a high pressure rinse, smooth dyed block, and synthetic stone use the EC Jet for a low pressure rinse.

II. The amount of foaming reaction will lessen with each application. When you apply NMD80 to a wall that is thoroughly cleaned, there will be little to no foaming as it contacts the wall. Rinse time will be dramatically reduced.

7. Begin rinsing from the top down. Use long even strokes that overlap each other. Good chemical application means that your rinsing passes can be done quickly without having to get close to the wall with the high pressure nozzle.

*** Pressure washers equipped with a down stream chemical injector (after the high pressure side) should have the injector removed before using the EC Jet. If the chemical injector is attached with a quick coupler, simply uncouple it and attach the pressure hose in its places. If the chemical injector is hard plumbed in place, simply place the chemical hose in a five gallon bucket full of water when using the EC Jet.

SOLUTIONS FOR PROFESSIONALS



NMD 80

NMD 80 is a powerful detergent-based solution designed for safe and effective removal of efflorescence and mortar smears from masonry surfaces. It can be used on all masonry substrates including brick, stone, synthetic stone, pre-cast concrete, designer or colored block. The added buffering ingredients allow NMD 80 to be powerful yet safe enough for glass and anodized aluminum. NMD 80 requires no respirator when working outdoors, preventing unnecessary fines.



SOS-50

SOS 50 is a buffered detergent-based solution designed for the cleaning of new masonry structures. The HCl has been replaced with Organic Salts, making this product an acid alternative where needed. SOS 50 can be used on virtually any type of brick, block, stone, cast stone and pre-cast. There is no scrubbing necessary.



Calcite Presoak

This product is designed as a pre-soak to facilitate quick removal of calcite on block, brick, or concrete. Calcite Presoak is used in conjunction with NMD 80 to ensure complete removal of calcite. Calcite Presoak provides powerful penetration and softening action of Calcite. First apply Calcite Presoak straight and allow a dwell time of approximately 5 minutes. Once you've opened up little pin holes, then apply NMD 80 cut 4:1 wet on wet without rinsing in between. Allow dwell time 5-10 minutes. Then rinse to get complete satisfaction.



White Scum Presoak

This product is designed as a pre-soak to facilitate quick removal of white scum on block, brick, or concrete. White Scum Presoak is used in conjunction with NMD 80 to ensure complete removal of white scum. White Scum Presoak provides powerful penetration and softening action of white scum. First apply White Scum Presoak straight and allow a dwell time of 5-10 minutes. Then apply NMD 80 cut 4:1 wet on wet without rinsing in between. Allow dwell time 5-10 minutes. Then rinse to get complete satisfaction.



OneRestore®

OneRestore is a breakthrough product that provides remarkable versatility, cleaning power and safety all in one product. Capable of removing the deepest pollution stains from limestone and brick, it is also used to safely restore glass and anodized aluminum. This product can remove virtually any metal oxide stain including copper stains and can be an effective coating remover. Safe for most surfaces and people, OneRestore is a great choice for cleaning and restoring colleges, schools, hospitals, government facilities and offices. With a "spray on/spray off" application process, OneRestore will save hours of cleaning time versus the traditional bucket and brush process.



EF-Fortless

EF-Fortless is a soap solution that melts powdery efflorescence and haze from cleanup efflorescence, and helps to control its return. This product is mildly acidic and perfect for use on color sensitive surfaces since it will not discolor brick, block or mortar. It can be used on slurry-dyed block and similar substrates. Simply apply EF-Fortless straight and wait for foam to collapse. Reapply as needed. No rinsing required. The amount of coverage will vary with the thickness of the efflorescence; with the most common powder type getting approximately 75 square feet per gallon. This product offers long-term protection. Surface can be sealed after one week.

Sealer Removers

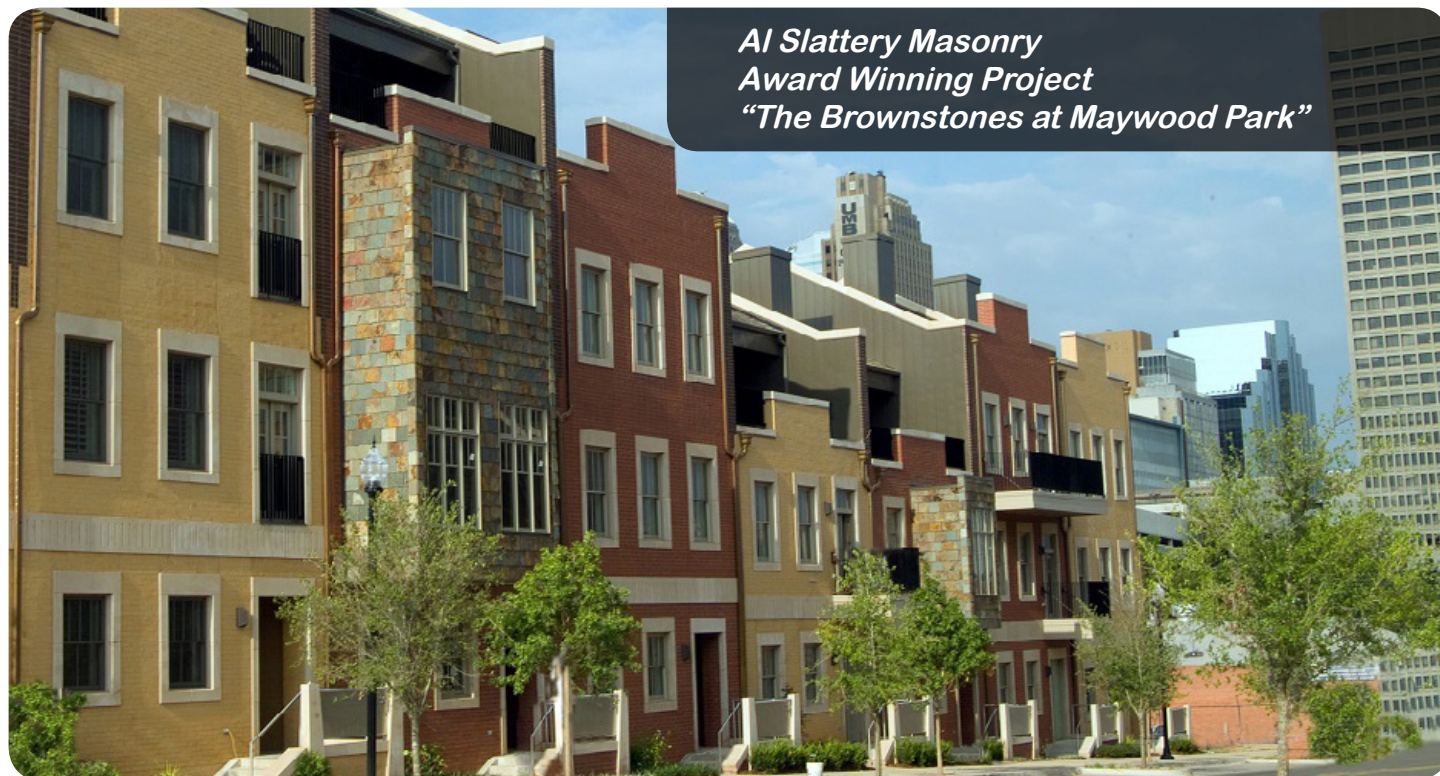
	Stripsol LO	Graf-Ex	Acrylistrip
(A) Acrylic Semi Gloss	5	4	5
(B) Solvent Based Silicone	4	5	5
(C) Solvent Based Acrylic	3	4	5

Results That Sell... Over and Over Again!

CONCRETE AND CLAY SUBSTRATES



SMART CHEMISTRY FOR SMART PEOPLE



Al Slattery Masonry has been cleaning with NMD 80 for years in the Oklahoma market. It has become part of his success formula.



EaCo Chem

NEW CONSTRUCTION

NEW CONSTRUCTION CLEANING WITH EACO CHEM,

If you are the last person to experience

the **safety**

the **lower cost with increased production**

and the **reputation enhancing, excellent cleaning results**

are you the **WINNER**
or the **biggest loser?**

Be the **WINNER.**

TRAINING THE TRAINER

The **COMPLETE & ULTIMATE**
trainer's manual for
NEW CONSTRUCTION CLEANING

EXPERT ADVICE FOR:

- * EACO CHEM PROCESS
- * WORKER ISSUES
- * MASONRY PRACTICES
- * MORTAR

- * SUBSTRATES
- * PROBLEM
RESOLUTION



EaCo Chem



\$29.99 US

\$38.00 CAN